

PATHFINDER INTERNATIONAL 2012 ANNUAL REPORT

Driving Innovation

in Sexual and Reproductive Health



What is the return on your investment in innovative sexual and reproductive health care?

Last year, nearly 18 million client visits were made to Pathfinder-supported health facilities. We believe this gives men, women, and youth the opportunity to become healthier, happier, and more empowered.

CONTRACEPTION

Women and men made more than 5 million visits to health facilities for contraceptive services. Pathfinder-supported family planning services (as measured by couple-years of protection) averted an estimated 645,600 unintended pregnancies, 2,240 maternal deaths, and 69,300 abortions.



5M+

MATERNAL, NEWBORN, AND CHILD CARE

Women made more than 10 million visits for antenatal, postpartum, newborn, and child care. Facility staff supervised 550,000 deliveries and treated 4,175 women for complications of pregnancy and childbirth.



10M+

ADOLESCENT AND YOUTH

Young people made almost 400,000 visits to youth-friendly services.



400K

ABORTION

More than 59,600 women were provided with safe abortions and more than 8,700 women were treated for complications of unsafe abortion.*

**Abortion and postabortion services delivered 2010-2011*



60K

HIV AND AIDS

Over 3.3 million women, men, and young people received HIV and AIDS services.



3.3M

ADVOCACY

In 19 countries, Pathfinder staff work with local and national governments to inform policies and promote system changes that improve the sexual and reproductive health of women, men, and young people.



19



Purnima Mane presents bicycles to community health workers in Tanzania.

To the extended Pathfinder family,

It is with great pleasure that I sit down to write this, my first annual report letter as Pathfinder's President and CEO. This past year has been one of transition for me and for Pathfinder. I have been touched and honored by the warm welcome I have received, not just from our staff around the world, but by many of you—our friends, supporters, and colleagues.

This year also brought a much welcomed, renewed focus and energy for family planning and sexual and reproductive health. From the London Summit on Family Planning, to the Rio +20 Conference, which highlighted the importance of girls and women in the push to bring about sustainable, global development, to the recent US Government's Executive Order on Preventing and Responding to Violence Against Women and Girls; there are many recent developments to celebrate.

Pathfinder has never been afraid to change the status quo, or to use new solutions to solve existing problems. That spirit of innovation is alive and well today. It was one of the things which drew me to the organization. In this year of change we are continuing to blaze new paths. We are taking our work to new regions of the world, as we reach out to communities in francophone West Africa. We have launched groundbreaking collaborative projects, with new partners like The Nature Conservancy, to address not only the sexual and reproductive health needs of the people we serve, but also to develop new systems for sustainable, environmental stewardship. And we are addressing issues such as the diagnosis and treatment of cervical cancer.

In July, I visited our projects in Tanzania and had the opportunity to witness first-hand the positive impact on people's health that can be achieved through the use of fairly simple technology. In many of the places we work, remote geographies and communication delays pose major barriers to timely diagnosis, up-to-date data for health providers, and prompt referral from community level care to more sophisticated health facilities when necessary. Pathfinder is using mobile phones to link individuals, community health workers, and health clinics and hospitals. Since 2009, 3,770 referrals have been made with the help of this technology! I was delighted

to hear the satisfaction in the voices of community health workers at the improvements in the care they are able to provide. I am perhaps equally thrilled to know that Pathfinder is contributing to a nationally driven, government-led mobile phone health strategy as a core member of Tanzania's mHealth Community of Practice. Building the capacity of the communities and countries where Pathfinder works is at the center of Pathfinder's philosophy. For us it is particularly gratifying when we are able to contribute to true country ownership of innovations and programs that improve the lives of that country's citizens.

I hope you are as excited about these new endeavors as I am, as well as the promise of even more developments that are, as yet, only fledgling thoughts in Pathfinder's mind. This year, we have reaffirmed our dedication to meeting the perennial challenges of ensuring comprehensive sexual and reproductive health and rights for all people, including the most marginalized populations around the world. In a changing world, we will continue to go where the need is greatest, build the capacity of communities to enact their own change, and anticipate the sexual and reproductive health needs of those we serve before they arise. As I embrace my new Pathfinder family and benefit from the passion and creative expertise of our staff, I'd like to invite you to join us in this journey. Together, we will find the energy and creativity to tackle the challenges of ensuring that all people have the opportunity to enjoy a healthy sexual and reproductive future.

With warmest regards,

Purnima Mane, PhD
President and CEO



ETHIOPIA Sala Lewis



Embracing Innovation to Meet an Urgent Need

In 2012, Pathfinder went where the need was greatest—the places where women, men, and young people must fight every day to defend their sexual and reproductive health and rights. And we brought everything we have: *Over half a century of experience, unique alliances in every country at every level, and unwavering courage to take risks.* Pathfinder knows that in order to address the vast challenges faced by those in the developing world, we must be bold. We have to find new and better ways to be even more effective. So in 2012, that is exactly what we did.

A Brighter Future: Improving the Health of People and the Environment They Depend on



UGANDA Jake Lyell

DAY AFTER DAY, 27-YEAR-OLD GLORIA NAMUGENYI TOILS ON THE BEACH OF BUSI ISLAND WITH HER BABY SNUGGLED CLOSELY BESIDE HER. THE WIFE OF A FISHERMAN, SHE KNEELS IN THE SAND, DRYING HER HUSBAND'S MEAGER CATCH AND SHOONG BIRDS THAT HAVE COME TO FEED.

GLORIA WANTS MORE. THOUGH SHE DID NOT GO TO SCHOOL, SHE WANTS HER FIVE CHILDREN TO GET A GOOD EDUCATION. SHE WISHES TO PROTECT HERSELF FROM HIV AND TO USE CONTRACEPTION. SHE DREAMS OF LIFTING HER FAMILY OUT OF POVERTY, BUT EVERYTHING AND EVERYONE STANDS IN HER WAY. UNTIL NOW.

The second largest freshwater lake in the world, Lake Victoria is vital to the populations who surround it. The lake feeds tens of thousands of people and supplies two million fishermen with household incomes. But today, the health and sustainability of this ecosystem, and the people who rely on it, are threatened. Vast, interconnected challenges—poor maternal health, high unmet need for contraception, declining fisheries, soil degradation, and human, agricultural, and industrial waste—make these communities some of the poorest and least food secure in all of East Africa.

So Pathfinder is taking action. We are partnering with three local organizations in Kenya and Uganda to empower underserved communities with knowledge and skills to simultaneously improve their reproductive health, strengthen their livelihoods, and sustainably manage their natural resources.

Model Households: Our health and conservation activities are not just coordinated; they are entirely collaborative. Pathfinder and our partners holistically address the challenges people face. Hand-in-hand, project staff and community members identify 'Model Households'—families who have adopted healthy reproductive and environmental behaviors, like contraception, use of energy-saving stoves, and sustainable agricultural practices. And they welcome their neighbors into their homes for education and support.

"All these things are connected and needed for a healthy life," says Max Nalongo, a 28-year-old mother of four. Max is proud of the progress she has made through the project. In addition to heading up a Model Household, she works in her community, counseling women about reproductive health and distributing contraceptives.

"Family planning is important. It allows me to continue my work in the garden, which is too difficult when I am pregnant. Also, school fees are expensive. My husband and I said 'enough.' We want to keep our family the way it is."

OTHER COUNTRIES

In one of the most remote regions of Tanzania, Pathfinder is partnering with leaders in conservation—The Nature Conservancy and the Frankfurt Zoological Society—to protect women and nature.

online To learn more about this groundbreaking collaboration, visit www.pathfinder.org/tuungane

PHOTOS

left Alongside Lake Victoria, Pathfinder and our partners are empowering more women and men to adopt healthy behaviors related to their population, health, and environment. "As the project rolls on, communities will further appreciate the benefits of this integration and want to sustain the changes they've made."
—Pathfinder project staff

right Nurse Christine Wanyana relies on the solar suitcase. This easy-to-use, portable power unit offers a dependable form of renewable and environmentally friendly energy and ensures no woman gives birth in the dark, and prevents newborn babies from inhaling toxic fumes from kerosene lamps.

opposite Nurse Stella Nakayala uses solar light to deliver a baby boy.

PARTNERS

Ecological Christian Organization and Conservation Through Public Health in Uganda, and OSIENALA (Friends of Lake Victoria) in Kenya. The Solar Suitcase technology is fostered through a unique partnership with We Care Solar.

FUNDED BY

The John D. and Catherine T. MacArthur Foundation, the David and Lucile Packard Foundation, USAID, and individual donors.

"I AM HAPPY TO SEE THAT THE PROJECT HAS BROUGHT LIGHT TO ONE OF OUR HEALTH FACILITIES. EVEN PEOPLE FROM THE NEIGHBORING ISLANDS NOW COME TO THE HEALTH FACILITY TO BENEFIT FROM THEIR SERVICES." —Richard Waiswa, Deputy Chief Administrative Officer of Mayuge District, Uganda



WHY WE MUST ACT NOW

"When people's most basic human needs are neglected, they are unable to serve as good stewards of natural resources. These communities understand that population pressures contribute to more competition for scarce resources. They, more than anyone else, are concerned that their population is expected to double in the next two decades. But here's the truth: many simply cannot exercise their right to manage their fertility. This lack of access to contraception—an egregious social injustice—is just one of the many issues Pathfinder and our local partners are addressing head on." —Lucy Shillingji, Pathfinder Country Representative, Uganda



MOZAMBIQUE Mercedes Sayagues

Changing Laws, Saving Lives: Victory for Women's and Girls' Rights

“FOLLOWING AN UNSAFE ABORTION, AN 18-YEAR-OLD GIRL ARRIVED AT THE CHICUQUE RURAL HOSPITAL IN MOZAMBIQUE NEAR DEATH. SOMEONE PERFORATED HER UTERUS AND RECTUM WITH A SHARP OBJECT. IT WAS DONE AT HOME WITHOUT ANY ANESTHETICS. CAN YOU IMAGINE THE PAIN?”

—Timoteo Jack, MD, Mozambique

Every year, 47,000 women die from complications of unsafe abortion (the Guttmacher Institute, 2012). Virtually all of these deaths occur in countries with highly restrictive abortion laws. In Mozambique, a woman must overcome barriers to have a safe and legal abortion. She is required to pay a service fee and cover the cost of an ultrasound. She cannot access medical abortion, a safe, low-cost, noninvasive alternative to surgery that uses drugs, like Misoprostol.

These are just a few of the restrictions. They are especially harmful to poor women in rural areas, who have little choice about their reproductive health because they have the least access to contraception. Again and again, these women resort to unsafe procedures at the hands of an untrained person in unsanitary conditions.

Pathfinder believes that access to abortion services is not only a public health imperative, it is also every woman's right to determine when and if to have children. That is why in 2011, Pathfinder collaborated with a number of civil society organizations in Mozambique to form the 'Coalition for the Defense of Sexual and Reproductive Rights.' With support from the Ministry of Health, the Coalition advocated with members of the Mozambican Parliament to revise the penal code on abortion. These efforts were so successful that the Coalition was invited to participate in the crafting the code's revision. Once approved by Parliament, the code will allow greater access to elective abortion services to all women within the first 12 weeks of pregnancy and women whose health is at risk or who are survivors of sexual assault.

“Strong advocacy can change laws and save lives,” said Rita Badiani, Pathfinder's Country Representative in Mozambique. “But advocacy is just one part of Pathfinder's approach to increasing access to safe abortion. We are also educating communities, so they know where to go for services, including contraception, safe abortion, and postabortion care. We are training providers in facilities, so when women arrive in need of comprehensive abortion care, they are sure to receive it.”

OTHER COUNTRIES

Pathfinder works to expand access to comprehensive abortion and postabortion care in Ghana, Mozambique, Tanzania, Ethiopia, Kenya, Peru, and South Africa.

[online](http://www.pathfinder.org/abortion) Read about our abortion work at www.pathfinder.org/abortion

PHOTOS

left Passage of the revised penal code will be an enormous victory for the women and girls of Mozambique, but it is only the beginning to ensuring widespread access to safe, affordable, non-discriminatory abortion services.

right Women all over the world have abortions. Often, their reasons are similar—to stay in school, because they cannot afford to raise another child, or because they have just given birth.

PARTNERS

The coalition comprises 12 members and it is coordinated by Women and Law in Southern Africa, Forum Mulher and Pathfinder International.

FUNDED BY

The Safe Abortion Action Fund and the Norwegian Ministry of Foreign Affairs through Pathfinder, in addition to other critical individual supporters.

Mobile Phones: Making Providers More Effective

Thanks to Pathfinder's pioneering Tutunzane project ("Let's take care of each other"), 44,000 Tanzanians can access critical services in their homes to improve their health, extend their lives, and reduce the transmission of HIV. To further strengthen these services, Pathfinder seizes new opportunities like this one:

By 2011, 80 percent of all new mobile phone subscribers were in developing countries. So Pathfinder and our partners equipped 300 providers with mobile phones that have a simple, yet powerful "mobile health app."

When Mwanaisha Abdala arrives at her client's home, she uses her phone to guide counseling sessions, collect data, conduct a survey, follow a checklist, manage her caseload, and more. "The HIV-positive women and men I support are getting higher quality care. They feel more confident about my services."

Pathfinder has used this innovative tool in Tanzania for the past three years, and its benefits are clear:

Real-time data: Data from every visit is sent instantaneously to a centralized server, and each client's history is retained. This means Pathfinder and our partners can access the same data and even set alerts.

Faster, more accurate reporting: Instead of relying on tedious paper forms, which can easily introduce errors, project and government staff can use the app to make decisions based on up-to-the minute, accurate information.

Better supervision: Using these data, a project manager can get a clear picture of what is happening on the ground. She can identify a problem—i.e., a provider who neglects to follow up with a client—and correct it on the spot.

"THESE COMMUNITY HEALTH WORKERS ARE UNIQUELY POSITIONED TO COLLECT DATA NEEDED BY PROGRAMS AT THE NATIONAL LEVEL AT A LOW COST. AND, BECAUSE THEY ARE PART OF THE LOCAL COMMUNITY, THEY CAN GET THIS INFORMATION WITH GREATER CULTURAL SENSITIVITY."

—Benjamin Mrema, Data Management Officer, Tanzania



TANZANIA Sala Lewis

PHOTO

Since providers have begun using this mobile health technology in Tanzania, providers have completed more referrals (3,770 referrals have been made using mobile phone technology since the start of the project).

PARTNERS

D-Tree International

FUNDED BY

Centers for Disease Control and Prevention

OTHER COUNTRIES

In Viet Nam, Pathfinder helped establish an interactive voice response system, using text messages, to send health education messages to ethnic minorities.

In Nigeria, Pathfinder and our partner, Dimagi, are using the app to help community health workers in 20 health facilities improve the quality of antenatal care.

In Kenya, Pathfinder is helping to develop an app to support community health workers roll out the services under the Essential Package for Health.

online Learn more about Pathfinder's mHealth initiatives at www.pathfinder.org/mhealth



NIGERIA Akintunde Akinyele

Scaling Up What Works: Saving Mothers' Lives Countrywide

“THE WIDESPREAD ADOPTION OF ‘CONTINUUM OF CARE’ MODELS LIKE PATHFINDER’S—WITH ITS CONSTELLATION OF ACTIVITIES AND TECHNOLOGIES*—CAN REDUCE MATERNAL MORTALITY FROM POSTPARTUM HEMORRHAGE BY AT LEAST 50 PERCENT, SAVING THOUSANDS OF WOMEN’S LIVES ANNUALLY.” —*Dr. Suellen Miller, University of California, San Francisco*

* These include, but are not limited to: the prevention and recognition of PPH in communities and facilities, improved management of shock, use of the non-pneumatic anti-shock garment, and rapid transport women who need to be moved to a hospital.

In 2007, Pathfinder began a pilot project to address the leading direct cause of maternal mortality—postpartum hemorrhage (excessive bleeding after childbirth). Today, we are pleased to announce that Nigeria’s state governments are adopting Pathfinder’s model, and scaling it up to save mothers’ lives in nearly every part of the country.

The key to Pathfinder’s model is that it empowers communities, health care providers, and governments to work together. It gives them the tools to address the myriad of life-threatening challenges pregnant women face, such as a lack of skilled providers, inadequate transportation, limited blood supplies, and delays in receiving emergency obstetric care. The model also champions a low-tech, low-cost neoprene wrap—the non-pneumatic anti-shock garment—that maintains blood flow to a woman’s vital organs, buying her time, while she waits for blood replacement and/or emergency obstetric care.

“[The garment] is a major life-saving support device, easy to administer by any health personnel and needs to be available for pregnant women everywhere and particularly in low-resource countries,” declared the International Federation of Gynecology and Obstetrics. This new endorsement is just one of many, based on the progress made by organizations like Pathfinder. Today in Nigeria, Pathfinder’s project data show health care providers are increasingly using the garment for women in shock—up from 59 percent in 2008 to 94 percent in 2012.

“Our work has garnered massive support from governments, policymakers, implementing partners, and donors, who want to see Pathfinder’s model scaled up to reach more women,” said Dr. Farouk Jega, Pathfinder’s Nigeria Country Representative. “It’s remarkable. And we will keep moving forward.”

OTHER COUNTRIES

The model is being implemented in India, Tanzania, Peru, Bangladesh, and Burundi. In each country, it is adapted to best meet the local context and relies on the critical support of local partners and donors.

online Learn more about Pathfinder’s continuum of care model at www.pathfinder.org/pph

PHOTOS

left The Nurse Midwifery Council of Nigeria has incorporated the model’s innovative technologies, including the non-pneumatic anti-shock garment, into pre-service curricula for all trainees. This means students will graduate with knowledge and skills to manage PPH, and less money has to be spent on costly in-service training.

right A nurse measures vital signs of a woman wearing a non-pneumatic anti-shock garment.

PARTNERS

The Federal Ministry of Health of Nigeria; the National Primary Health Care Development Agency; UNFPA; and the State Governments of Lagos, Nasarawa, Ebonyi, Yobe, Kano, Katsina, and Oyo.

FUNDED BY

The John D. and Catherine T. MacArthur Foundation.

Merck, through its Merck for Mothers program, recently awarded funds to extend this important work in Nigeria and Peru.

Country Led:

Empowering the Women Who Will Change the World

In the world's poorest, most underserved countries, people struggle to stay healthy. They rely on government-directed health systems that are often plagued by inefficiencies, poor management, low-quality services, and more. Communities on the outskirts are particularly vulnerable; services simply do not reach them.

But change is coming. Federal Ministries of Health in Ethiopia, India, and Pakistan have invested heavily in reproductive health, deploying hundreds of thousands of female health workers to underserved, hard-to-reach communities. And Pathfinder is there to support them.

Ethiopia: Jamilla Waagee routinely walks from one end of her village to another to provide sexual and reproductive health and other basic health services to her neighbors. Jamilla is one of over 12,000 Health Extension Workers, supported by our Integrated Family Health Program, working in 300 districts and reaching over 35 million people.

India: A young newlywed named Muni Devi says, "I want to wait to have my first baby because I am young." So Sangeeta Kumari counsels her about her options for contraception. Sangeeta is one of 1,295 Accredited Social Health Activists trained in the third phase of Pathfinder's PRACHAR project to cover approximately 960 villages with a population of 10.1 million.

Pakistan: Seated beside them in a circle, Nuzhat Bibi counsels women about healthy timing and spacing of pregnancy and explains how different contraceptives work. Nuzhat is one of 1,400 Lady Health Workers trained by Pathfinder, who have provided family planning and maternal and child health services to nearly 200,000 people.

"PATHFINDER IS A LEADER IN BRINGING CARE TO UNDERSERVED PEOPLE THROUGH COMMUNITY-BASED SERVICE PROVIDERS. BUT, AS WITH ALL OF OUR WORK, PROGRESS DEPENDS ON OUR LOCAL PARTNERS IN GOVERNMENT AND CIVIL SOCIETIES. THEY'VE MADE THE INVESTMENT. THROUGH OUR TECHNICAL SUPPORT, PATHFINDER SHOWS THE PATH AND MAKES SURE THEIR INVESTMENT PAYS OFF."

—Mengistu Asnake, MD, MPH,

Pathfinder Country Representative, Ethiopia



INDIA Linda Sutfenfield

PHOTO

Sangeeta uses a flipbook to counsel Muni on her options for family planning, saying, "Delaying pregnancy is good for your health and the health of your baby."

PARTNERS

Explore our many critical partners, who make this work possible, online at www.pathfinder.org/our-work/projects/

FUNDED BY

Ethiopia USAID

India The David and Lucile Packard Foundation

Pakistan The Bill and Melinda Gates Foundation, the David and Lucile Packard Foundation, and Individual donors

OTHER COUNTRIES

Pathfinder empowers community health workers across the many countries where we work, including Bangladesh, Botswana, Burundi, Kenya, Mozambique, and Tanzania.

online Learn more about Pathfinder's approach at www.pathfinder.org/HowWeWork

For the year ended June 2012

Chief Financial Officer's Report

This year's Annual Report shines with examples of Pathfinder innovations.

I began my career in one of the most innovative organizations in the world—a computer firm driven by continuous technological advance. There, I learned how the finance function could best support an innovative organization: we avoid risks in the finances so that we can afford to take calculated risks in the operations.

This is our mantra at Pathfinder.

Pathfinder runs the finances in a conservative manner to allow innovation where it counts—at clinics, with health ministries, and in the communities we serve. We reduce our financial risks by establishing tight and effective internal controls. We create straightforward financial procedures, and then document, train, and audit. We are fastidious custodians of our donors' contributions: investing our funds conservatively, using them tactically to invest in innovative projects, and, as funds are deployed, rigorously monitoring their use. This year's financial statements demonstrate this approach. Our small operating deficit includes investments in future innovations, specifically in pilot projects in Asia, Africa, and mobile technology to improve health service delivery.

Our financial managers do not chase after financial innovation. We aim higher. Through prudence in our financial management, we erect a secure scaffolding to support Pathfinder's programmatic innovation—innovation that improves health and wellbeing across the globe.

Respectfully,



Thomas Downing, MBA
Chief Financial Officer

STATEMENT OF ACTIVITIES

REVENUES, GAINS, AND OTHER SUPPORT

Grants and contracts	\$97,157,951
Contributions	3,334,564
Other	538,390

TOTAL	101,030,905
--------------	--------------------

EXPENSES

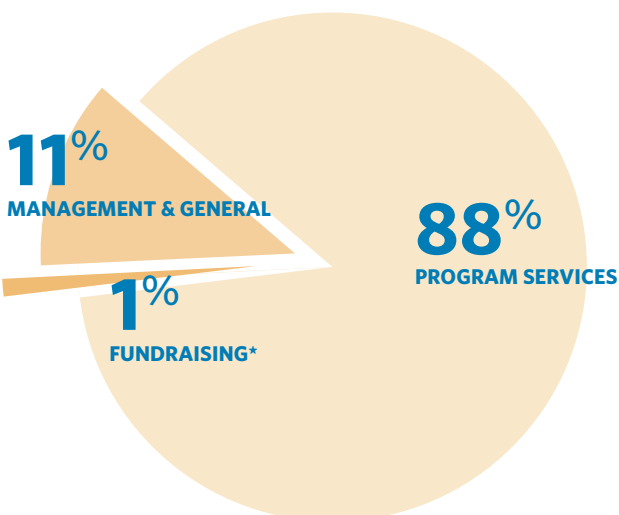
Program services	89,289,931
Management and general	10,613,121
Fundraising	1,303,037

TOTAL	101,206,089
--------------	--------------------

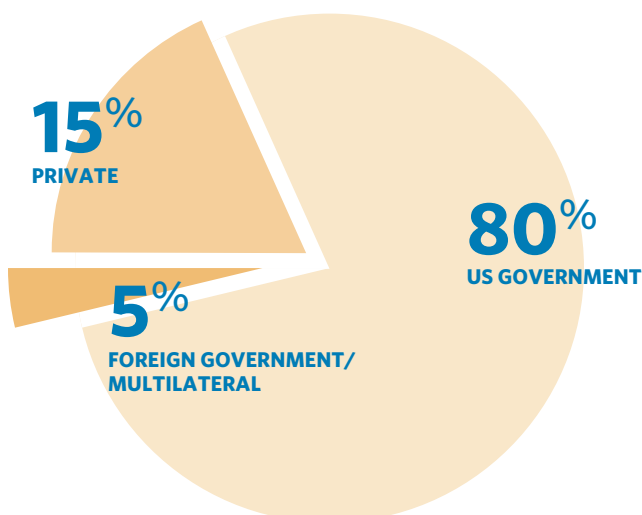
Operating surplus	(175,184)
Non-operating gains	396,036
Net assets at beginning of year	33,505,948
Net assets at end of year	33,726,800

The information presented above is drawn from Pathfinder International's financial statements, audited by Mayer Hoffman McCann P.C. They are available from our headquarters office upon request or at www.pathfinder.org/financials

TOTAL EXPENSES



SOURCES OF FUNDING

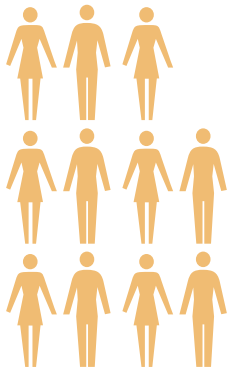


*Pathfinder has received Charity Navigator's highest overall rating of four stars.

PATHFINDER STAFF BY LOCATION (1,003 total)



2%
IN WASHINGTON DC
18 Staff



11%
AT HEADQUARTERS
107 Staff



87%
IN THE FIELD
878 Staff

online Meet our staff at www.pathfinder.org/staff

AS OF JUNE 30, 2012

Board of Directors

FOUNDERS

Clarence J. Gamble, MD
[1894-1966]
Sarah B. Gamble
[1898-1984]

PRESIDENT

Purnima Mane, PhD

OFFICERS

Cynthia A. Fields
Chair of the Board

James M. Schwartz
Vice Chair

Manuel Urbina, MD, MPH
Secretary

Benjamin R. Kahrl
Treasurer

BOARD OF DIRECTORS

Sharon W. Allison

Andrew A. Arkutu, MB, FRCOG

Claudine Bacher

Richard L. Berkowitz, MD

Robert J. Bobb

Andrew L. Frey

Walter J. Gamble, MD

Jane L. Havemeyer

Edward M. Kaplan

Rajen A. Kilachand

Elisabeth L. Lyon

Florence W. Manguyu, MD

R. Lucia Riddle

Margaret Ruttenberg, MD

Prakash Shah

Valerie C. Spencer

Ronda E. Stryker

John F. Swift

Alfred W. Tate

Ralph S. Tate

June L. Tatelman

George N. Todd

Roslyn M. Watson

EMERITUS DIRECTORS

J. Bayard Boyle, Jr.

Cornelia L. Cook

Patricia J. Cooper

James R. Epstein

Sarah G. Epstein

Henry W. Foster, Jr., MD

Susan M. George, MD

Mary B. Hewlett

Denise E. Holmes, JD, MPH

Anne Hale Johnson

Julia G. Kahrl, PhD

Susan C. Kirk

Kathryn H. Lansing

Mary D. Lindsay

Nafis Sadik, MD

Normand F. Smith, III, Esq.

Kathryn Ketcham Strong

Joseph C. Wheeler

Annual Operating Support



WHY IS INDIVIDUAL SUPPORT SO CRITICAL?

Thanks to the generosity and commitment of key individual donors, Pathfinder is engaging in an unprecedented partnership with two global leaders in conservation—The Nature Conservancy and the Frankfurt Zoological Society—in a remote corner of western Tanzania. Together, we are able to reach underserved communities with the tools they seek to live healthy lives in balance with their environment.

Pathfinder International's mission is to ensure that people everywhere have the right and opportunity to live a healthy sexual and reproductive life. We thank all our supporters for your unwavering support in pursuit this mission.

Organizations

Government and Multilateral Agencies

Department of Commerce
Department of Health and Human Services,
Centers for Disease Control and Prevention
Federal Government of Nigeria
The Global Fund to Fight AIDS, Tuberculosis
and Malaria
Government of Flanders
Government of Mozambique
Government of New Zealand
Government of Norway
Government of the Republic of Burundi
International Centre for Diarrhoeal Disease
Research, Bangladesh
Swedish International Development
Cooperation Agency
United Nations Development Programme (UNDP)
United Nations Development Fund for Women
(UNIFEM)
The United Nations Population Fund (UNFPA)
United States Agency for International
Development (USAID)*

Associations, Non Profit Organizations and Coalitions

BBC World Service Trust
Creative Associates International
ESAR Foundation
Family Health International
Georgetown University of Reproductive Health
Elizabeth Glaser Pediatric AIDS Foundation
IntraHealth International, Inc.
Kaiser Permanente Community Giving Campaign
Management Sciences for Health
MSI-US
Pact, Inc.
PATH
Population Action International
Population Services International
The Regents of the University of California
Reproductive Health Uganda

The Trustees of Columbia University,
City of New York
Uganda Red Cross Society
United Way of Silicon Valley
World Bank
World Learning

Foundations

Africa Family Planning and HIV Integration Fund
at Tides Foundation
Anonymous (3)
The Atlantic Philanthropies
BelleJAR Foundation
The Brush Foundation*
Compton Foundation, Inc.*
George and Patricia Ann Fisher Foundation
The Ford Foundation*
The Foundation for a Just Society
Bill & Melinda Gates Foundation
GlobalGiving Foundation
GlobalGiving UK
Richard and Rhoda Goldman Fund
The William and Flora Hewlett Foundation*
George Frederick Jewett Foundation*
The John D. and Catherine T. MacArthur
Foundation*
The McKnight Foundation
Money Well Spent Fund at the Tides Foundation
The David and Lucile Packard Foundation*
Results for Development Institute
The Rockefeller Foundation
Safe Abortion Action Fund
The Summit Charitable Foundation, Inc.
Tides Canada Foundation's Pathfinder International
Fund of Tides Foundation
The Trull Foundation
Wallace Global Fund
Women, Children and Family Service Charities
of America

Corporations/Businesses

Bayer Schering
ExxonMobil Foundation
GlaxoSmithKline

Google Incorporated
Johnson & Johnson Asia Pacific Contribution
Committee
JustGive.org
The Positive Action for Children Fund
Query On, Inc.
Yo La Tengo, Inc.

Matching Gift Companies

Adobe Matching Gift Program
Aetna
AMD Matching Gift Program
Flora Family Foundation
GE Foundation Matching Gift Program
Google Matching Gifts Program
Grantham, Mayo, Van Otterloo & Co. LLC
William and Flora Hewlett Foundation
Matching Gift Program
Longview Foundation
Meredith Corporation Foundation Matching
Gift Program
Microsoft Matching Gifts Program
Millennium Matching Gift Program
Pepsico Foundation Matching Gift Program
Pfizer Foundation

Individuals and Family Foundations

Benefactors \$25,000+

Janet V. Andrews and Robert R. Andrews Fund
of the Minneapolis Foundation
Anonymous (3)
Avenir Foundation, Inc.
Michael A. Berman, MD
Robert J. Bobb
Briarwood Farm Foundation
The Philip Stoddard and Adele Smith Brown
Foundation*
The Clemens Family Foundation
Anthony Cole
Sarah G. Epstein and Donald A. Collins*
Cynthia and Herbert Fields
G.D.S. Legacy Foundation, Inc.
Walter J. Gamble, MD and Anne Gamble*



A NEW COUNTRY, A NEW APPROACH FOR PROTECTING WOMEN'S RIGHTS

Pathfinder's first project in China addresses the stark health inequities of young female migrant workers. The project is creating a model to reach this particularly vulnerable group—most under the age of 30 with little education, who moved from their rural homes to earn money in urban factories—that can eventually be scaled up through the China Family Planning Association network.

FUNDED BY

Individual donors

David W. Husch
Kahn Charitable Foundation
Benjamin R. Kahrl and Karen Smith Kahrl*
George Kahrl*
Julia G. Kahrl, PhD*
Rajen Kilachand Family
Kitty and Rob Lansing
Mary D. Lindsay*
Thomas A. Nowak, MD and Bette H. Sprague
The Perkins Charitable Foundation*
RiverStyx Foundation
Shenandoah Foundation
Suzanne and Stuart Steele
Stryker Johnston Foundation

Rosemary E. Heil
Anne Hale Johnson
Thalia Gamble Kidder and Marien Llanes
KRL Foundation
CB Laub Family Foundation
Walter H. and Ruth MacGinitie*
Roger and Margot Milliken
Bonnie New Family Fund
Parking Lot Giving Fund of RSF Social Finance
Anne B. Pierson, MD
Andrea Roberts and Marc Foster
James and Pamela Schwartz
Valerie and Ed Spencer, Broadwaters Foundation
Kathryn Ketcham Strong and Robert Strong

Irene and Downs McCloskey, Jr.*
Christine B. and T. Todd McVay
Purple Lady/Barbara J. Meislin Fund
B.T. Rocca, Jr. Foundation*
Normand F. Smith, III, Esq. and Judy Reed Smith*
Sally and Charles O. Svenson
Alfred W. Tate
Amir H. Torkaman
Anna M. Voytovich
James and Jean Wood

Partners \$2,500-\$4,999

Anonymous (7)
The Barmore Fund
Scott Sherwood Benson and Ky-Van Lee
Dr. Margaret B. Brown
John and Elizabeth Caflich
Karen Sambold Dana
Lois H. and Richard England, Sr.*
James R. Epstein*
Fore River Foundation
Henry W. Foster, Jr., MD and St. Clair Foster*
Lawrence M. Gelb Foundation, Inc.
The Gifford Family Foundation
Giga Foundation
L. S. Gimbel, III and S. S. Steiner
Barbara S. Haroldson
Lynsey M. Heffernan and Brian Murphy
William W. Hildreth
Mr. and Mrs. Craig C. Hill*
Mrs. John L. Kee, Jr.
Lori J. Kenschaft and Randall D. Smith
Dr. Patricia C. Kenschaft*
Carl E. Kessler Family Foundation
Morelle I. Levine
The Lookout Foundation, Inc.
Dr. Christopher B. McDougall, Jr.*
McVay Foundation
Mr. and Mrs. Morton Mendes
Vivian and Paul Olum Charitable Foundation
Dr. Marvin P. and Patricia D. Osman*

"MY PARENTS BELIEVED WE HAVE THE POWER TO IMPROVE QUALITY OF LIFE, NOT ONLY FOR OUR FAMILY, BUT THAT OF FUTURE GENERATIONS. TODAY, OUR CHILDREN (THE 3RD GENERATION) ARE EQUALLY COMMITTED TO SUPPORTING VISIONARY ORGANIZATIONS LIKE PATHFINDER." —*Tim Brown, The Philip Stoddard and Adele Smith Brown Foundation*

Swift Foundation
John F. Swift
Mr. and Mrs. Ralph Tate
Eliot and June Tatelman Family Foundation
Wiancko Charitable Foundation

Patrons \$10,000-\$24,999

Anonymous (6)
Susan Bacher Fund
William Barclay
The Bear Gulch Foundation*
Robert D. and Angela Biggar
Cici and Arthur F. Cook, Jr.
EcoTrust
Richard A. Epstein*
Fiduciary Charitable Foundation
Andrew Frey and Litty Holbrooke
Susan George, MD and Miles Epstein†
Jane C. Hays*

Dr. Ralph Ten Have
Tomchin Family Charitable Foundation
Warren F. Weck, Jr. Charitable Trust
W. Pete Welch

Sponsors \$5,000-\$9,999

Sharon and Sam Allison*
Anonymous (4)
Margaret A. Biggar*
David Bradlee and Kathryn Gardow
The Coleman Charitable Fund
Stanley Eisenberg
David and Linda Epstein*
Sarah C. Epstein and Joseph Patrick Junkin*
Alexis Flint
Robin Gurule
Mrs. Augustin S. Hart
Barbara A. and Donald F. Herbst*
Mary B. and Roger Hewlett*
Lee Family Charitable Lead Annuity Trust
Anne S. and Brian K Mazar



PREVENTING CERVICAL CANCER

In Ethiopia, women access life-saving services through Pathfinder's first and largest cervical cancer prevention project.

Pathfinder's cost-effective approach to preventing cervical cancer combines visual inspection of the cervix, using ordinary table vinegar, and same-day cryotherapy. Here, health personnel learn how to freeze premalignant cancer cells.

FUNDED BY

Centers for Disease Control and Prevention

Sally and Dan Pellegrom*
David F. and Patsy A. Pellegrom
Edward N. Perry and Cynthia W. Wood
Peter W. and Deirdre F. Quesada
Prakash Shah
Elizabeth D. Skinner
R. M. Thomas
Roslyn M. Watson
Adam Zambilowicz

Associates \$1,000-\$2,499

Janet Aardal
Tamara L. Abell
Samantha Garbers Adams and Scott A. Adams
Priscilla Annamanthodo
Anonymous (13)
Dr. Andrew Arkutu, MB Bch, FRCOG
Ruth N. Barber Charitable Lead Annuity Trust
Nancy B. and George P. Bates*
David J. and Nicole Berger
Margaret and Tomas Bergstrand
Ramesh and Kalpana Bhatia Family Foundation
Michele R. Bonnett
Mrs. Terry Gamble Boyer
J. Bayard and Huddy Boyle*
Eugenie Rowe Bradford*
Daniel Branton and Lana L. Branton
Peter Broner
Betty Dabney Brown and Randolph Brown
David A. Brown and Lowell Brook*
Mike and Susan Brown Charitable Trust
Jack and Jill Campbell
Catharine A. Carroll
Mr. and Mrs. Alan Carter
Kristin Cashore
Paul P. Caslavka, II
John Chamberlain
Robert C. and Judith Cheek
Dr. Geoffrey E. and Senator Martha Fuller Clark
Drs. David L. and Rebecca E. Conant*
Lawrence and Nancy M. Coolidge*
Patricia Cooper
Karen Copeland

Pamela Coravos, Esq. and Garrett Stuck
William H. Crocker
Caroline S. Crosbie and Jaime Benavente*
Sally Manny Cross
Corrine H. Dale, Virginia H. Dale,
Catherine D. McCain and Molly D. Smith
Sally M. and Holbrook R. Davis
Mary Lee Dayton
Patricia A. and William Dean*
Elzbet Diaz de Leon
Catherine S. Dickey and Peter Smith
Susan and Jim Dreisbach
Andrea and Barton Duncan
Malcolm and Mary Ruth Duncan
George O. and Kathleen D. Edwards, PhD
David and Margaret Engel Family Foundation
Lionel C. Epstein and Elizabeth P. Streicher*
Dennis G. Esposito
Katie Flint
Linda L. Fried
Robert W. and Kathy Gillespie
Glickenhau Foundation
Sanford Goodman Revocable Living Trust
Suzan Goodman, MD, MPH
Alice A. Greene*
Michelle M. Grisat
Susan R. Gunderson
Robin T. Hadley
Bill and Sally Haggett
Thomas Hall and Elizabeth McLoughlin
Caroline R. Ham*
Jane and William Havemeyer
Mr. and Mrs. Theodore W. Henning*
Jeannette M. Hobbins*
Douglas W. and Barbara E. Holdridge*
Denise E. Holmes, JD, MPH
Robert Hossley and Brenda Ross*
Sherry F. Huber
David and Dawn English
Mary H. and Dick Jaffe
Dan Jagusch

Mrs. Katharine H. Johnson
Elisabeth Jones
Mr. and Mrs. Martin R. Kaatz
Mr. and Mrs. Edward M. Kaplan
Jeffrey Katz
Joanne and Dennis Keith*
Jonathan Otis Kerlin
Henry W. Keyes*
Adam Klein
Marjorie and Ralph Koldinger*
Leeward Landing Fund of the Minneapolis
Foundation
Edith R. Lauderdale
Robert P. Lawrence*
Mary and Robert Lazarus, Jr.
Legacy II Philanthropic Fund at the Community
Foundation for Greater Buffalo*
Thomas A. Lehrer*
Diana and Brian Lempel
Pamela D. Long and Lee W. Miller*
Merloyd Ludington*
Mary Waterman Lunt*
Jerry Day Mason
Shelley and Scott McIntyre
Middlecott Foundation
Mary M. Munter
Lyla Nettles
Patricia Nichols
John Ohly
Ernest N. Ostro and Sarah Dupere
Barbara Parish and Gary Roberts
Preston S. and Barbara J. Parish
Asha and Arun Patel
Cary Richardson Paynter
Linda Pierce
Richard Plano and Kathy L. Yeager
Dana Points and Mark Satlof
Philip Preston
Bayard D. Rea*
Farzad Rezai
RMF Foundation
Carol Roaman
Dr. Inga Robbins

REACHING THE MOST AT-RISK POPULATIONS

"Prison is not the end of life," said one young prison inmate, catching his breath. He had just performed a skit to educate his peers about the dangers of unprotected sex. And he is not alone. Together with the Mozambican Ministry of Health, Pathfinder is training hundreds of peer educators in prisons, so they can empower others with the knowledge and tools to prevent HIV.

FUNDED BY

Centers for Disease Control and Prevention



MOZAMBIQUE Arminda Zandamela

Linda Roberts
Evelyne R. Rozner
Renate Schulz
Corina Schusheim
Dennis G. Shaw
Sayre P. Sheldon and Ridge Morgan*
The Sims/Maes Foundation, Inc.
Dr. Stephen and Mrs. Gayla Sosnick
Harriet S. Spencer
Lois and Arthur Stainman
Judith Sterry
Craig Stine and Jeannette Wilcox
Anne M. Stoddard
Erin Stokes Majernik and Craig S. Majernik
Karen D. Stram
Jean and Richard Swank
Gregory W. Swift
Anne D. Taft
Philip D. and Aija Thacher
Drew and Margaret Thoeni
Dr. Brian A. Tinsley
Stirling Tomkins, Jr.*
Mellissa Underwood
Barry and Elsa Waxman
Barbara and J. Dix Wayman, DDS
Mr. and Mrs. Joseph C. Wheeler
Jo Lynne Whiting*
Wichita Falls Area Community Foundation—
John Hirschi Donor Advised Fund
Alyssa Wilk
T. Walley Williams, III
Vicki L. and Thomas R. Williams
Steve and Chris Wilsey
Sarah Wolpov
Linda and Mark Worley
Jane Ellen Worthen
Jerrold M. Yos
Marielle D. and Stephen A. Yost
M.H. Young, Jr.*
Julie and Craig Zilles

Supporters \$500-999

Dr. Deborah Alexander
Steve Allenby and Family
Anonymous (7)
Drs. Baouendi and Rothschild
Keith D. Barton
Douglas J. Bender and Emma B. Trejo
Phoebe P. Bender*
Ruth G. and Carl S. Benson*
Kathryn and Larry Berkbigler
Jane K. and Allen Boorstein*
Carin C. Brown, MD
Roland Buck
Donald R. and Kathryn Buckley
Wayne L. and Cynthia M. Bullaughey
Robert V. Burns and Patricia Byrne
Odette Cadart-Ricard, PhD
Peggy and Glenn W. Calkins*
Nancy H. Callan
Karen Kay Carlson
Cindie Carroll-Pankhurst, PhD
William M. and Roseanne Chamberlain*
Clarissa H. Chandler
Chasin/Gilden Family Fund
Anna C. Chave
Sylvia Chi and Donald F. Stanat
David N. Church
Ralph F. Colin, Jr.
F. Craig Conrath, MD
Dana B. Cowin and Barclay Palmer
Paula B. Cronin
Marilyn M. and Larry H. Dale
John and Diane Schulman Davidow
Dr. Jonathan T. and Emme L. Deland
James Demetro
Dr. and Mrs. William DeRisi*
Stanley and Elizabeth Dole*
Charlotte P. Dougherty
James N. Eckstein*
Jonathan B. Eddy
Dr. E. Stanley Emery, III and Mrs. Ann Emery*
Judy H. Fair-Spaulding
Carol S. Feinberg and Kenneth B. Gilman

Nancy B. and Hart Fessenden
Kathy E. Fischer
Margaret Meyer Fogarty and John D. Fogarty
Jeffrey Fried
Greg Friedman
Faye L. Gelhard
Donald C. Gentry, DDS
Nancy J. Goldberg*
The Samuel & Grace Gorlitz Foundation
Mr. and Mrs. Charles M. Hamann*
Dan O. Hamilton
Alan Burnett Harper and Carol Baird*
Kristen M. Harris, PhD and Max Snodderly, PhD*
Mr. and Mrs. James A. Hart*
Elizabeth Colby Hays and Eric Guilmet
Patricia and Harvard K. Hecker*
Susan and Nelson Helm
Steven and Jean Henigson
Joel J. Hillhouse and Christine Adler
William R. Holman
Nancy S. and Thomas S. Inui
Dr. Monwhea Jeng
Janice M. Juraska*
Marianne B. and Wiley P. Kitchell
Edwin S. Kite
Judy and John Knutson
Stephen A. Kollins, MD
Melissa Kramer and Dan Foster
Frances M. and Donald J. Krogstad
Elisabeth I. Lahti
Maureen Lee and Mark Busto
Margaret J. LeMaster*
Peter V. Lindsay and Mary-Kate Murphy
Margaret and Ross Macdonald Fund of the
Triangle Community Foundation*
Wendy Mackenzie and Alexander Cortesi
Drs. Florence W. and Albert M. Manguyu
Alex Margolies
Terry A. Marsh*
Brent J. Martin
Redge A. and Carole H. Martin

CHANGING BEHAVIORS THROUGH HANDS-ON EDUCATION

In Viet Nam, young people play a game to learn how to prevent HIV. Through this lively, hands-on approach, adolescents gain practical skills—how to negotiate condom use and how to talk to adults about their sexual and reproductive health—that they can use in their daily lives.

FUNDED BY

Johnson & Johnson Asia Pacific Contribution Committee



VIET NAM
Ehrin Mackesey

Louise S. Mauran
Martha and Bill McLaughlin
Katherine and Ben Meares
Rekha Murthy and John Grant
Grace E. and John J. Nichols
Ruth A. Nickodemus
Alice C. and Dan H. Nicolson*
Alfred and Bronda Niese
Judy Norris
Alexander Obbard
Leslie O'Loughlin*
Steven E. Olson*
Dr. and Mrs. Winfield B. Perry*
Petchers Foundation
Marnie S. Pillsbury*
Pool Family Fund
Helen R. and Daniel J. Quinn*
Robert L. Ralston, Esq.
Curtis Read
Sydney Reed
Glenn and Joyce Reynolds
Johanne M. Riddick and Carl F. Struck*
R. Lucia Riddle
Mary J. and Clifford R. Roberts
Patricia L. and Richard E. Robertson*
Barbara F. Rodes
Ellen Witzling Roff
Suzanne T. Rothschild
Emily T. Rowe, MD and Christopher M. Estes, MD
Nancy J. Rupprecht
Aurelio Santiago
Ann Satterthwaite
Richard Allen Schneider
Robert L. and Elizabeth H. Scott*
Stirling D. Scruggs
Allison Silverman
Eleanor and Christopher Smith
Susan Snider
David Stagman and Allison Margolies
Hans Steenborg
Stettenheim Foundation
Jean Stevens and Jeffrey Bernstein
Caroline S. and Bill Stevenson

Eileen M. and Joe S. Tenn
Julie Thompson
Mark S. Thompson
Athelia Tilson
Brooke L. Walker
Mary Lee and James E. Ward, III
Willa Warren
Greg Wendling
Kim S. and Kathleen W. Wennesland*
Amy S. Wilson*
Gordon R. Wright
Elizabeth Zukoski

Friends \$250-499

Eric E. Aagaard
Raydean Acevedo
Miriam R. Alper
Drs. William D. and Paula S. Amis
Anonymous (5)
Louise C. and James R. Arnold*
Mary Auth
Janet Bartholomew
Ms. Allison Bayer
Maria and Douglas Bayer
Ellen M. Beasley and Kevin P. Baker
Randy Beezley
Sheryl Bell
Edward Benkert
Debbie L. Benner
Richard L. Berkowitz, MD
Linda C. Black
David N. Bogart*
Catherine and Richard Bolczak
Sylvia Boris and Wendon Davis
Claire M. and John W. Bossung*
Katherine L. Bourne and Mark T. Munger
V. Martha and Werner W. Brandt
Nancy Houghton Brown and Howard H. Brown
Ruth L. and Thomas W. Brown
Cornelia Brüssow
Matt Bullard

Dr. and Mrs. Ronald J. Cain
Sarah Calvo
Cheryl S. Cammer and Howard Traite
Richard Caplow
Meg W. Chamberlin
Donald F. Charles*
Cindy S. and Bryan G. Chin
Sumaira A. Chowdhury
Joy and David N. Church
Ed Cohen
Courtney Costello
Sandra Cunningham
Carrie A. Cwiak
Matthew D. Davis, MD and Nancy L. Davis*
Edward N. Dayton
Barbara Duncan Deller
Suzanne T. and Stanley N. Dolensky
Hank and Mary Doll
Heather Drake
Richard Drill-Mellum
Marguerite E. Edmondson
Patricia F. and Dean V. Ekstam
John Etherton
Charles Feigenbaum
FIFE Family Foundation, Inc.
Gro Flatebo and Kent Wommack
William Fogel
Edmund B. and Elizabeth M. Games
Michael Gardner
Lee J. Garvin
Tanner O. and David M. Gay*
William J. Gibbons*
Doris and Lawrence Goldberg
Deborah E. Goldsmith
Mary D. Gordon
Lorraine L. Grace
Edward C. Gray
Susan and Philip Greenberg*
Martin K. Griffith
Elaine L. Gross
Thomas Gross, MD
Michael Gurevich
Natalie Zinn Haar Foundation



IMPROVING YOUNG PEOPLE'S HEALTH AND LIVELIHOODS

In Egypt, Pathfinder is teaming up with local organizations to address two urgent needs for youth in rural areas—a lack of employment and poor health. Our goal is to hire 1,500 young people, 90 percent of whom are women, as community health activists, while also training women to start their own microenterprises.

FUNDED BY
USAID

Elaine G. Hadden
Chris Hansen
Ann B. Harmon and Ben J. Lehman
Sarah Healey
Bob and Marge Healing
Sukey Heard and Roger Heard
John Heck
Thomas F. Heck
Carlyle Paff Hedrick
Nathan Herring and Miller H. Sherling
Dr. Judith Herzfeld*
Laurel and James T. Higgins
James Hirshberg
Caroline and Fred Hoppin
Nicole Horner

Mustafa Kudrati
Christopher C. and Alida Latham
Mr. and Mrs. Tienne E. Lee
Kathryn A. Leitch and Charles S. Lodge
Nancy A. Leitch, MD and Paul Amundson
John Leubsdorf and Lynn B. Montz*
Carla and Don Lewis
William H. Leyva
Joan Lister
Lenore Z. and Elliot D. Lobel
Kim and Michael K. Marshall*
Sharon V. Mayes
Patricia Mazza
Sara McAlister
Tiverton and Austin McClintock

Pamela M. and Paul M. Ness*
Nana Nkrumah
James W. Novosel
Daniel G. O'Connor
Dr. Frederick K. Orkin
Elisabeth Jenney Paige
Robert Pallansch
Douglas Paprocki*
Andrea Paulson
Cathy Pearl and Christopher J. Leggetter
Emily C. Pearson, MD and Jeffrey P. Pearson, MD
Christine Pesout
Gloria C. Phares, Esq. and Richard Dannay
Ellen D. and David S. Phelps
J. David Powell
Frances G. and Harold I. Pratt*
Dr. and Mrs. Robert H. Ramey
Margaret E. Richardson
Mary E. and Jim M. Roane
Jane K. and Julian L. Roberts
Janet A. Rossi
Megan Rowe
Dr. Elizabeth Rozanski
Joseph Rubel
Jocelyn M. Rushford
Rita J. and Raymond A. Rust
Erik E. Sabina
Margaret Sanborn
Nancy D. and Stewart Sanders*
Clarine and Sidney Schmukler*
Leonard Schwigen and Patricia Corrigan
Elizabeth S. Sedgwick
Margaret Selby-Soran and Philip E. Soran
Kathryn Selleck and Michael Johnson
Marianne E. Selph
Linda R. Shead and Tom Douglas
Mary S. Shepherd
Dr. Anne C. Sigleo
Donald L. Smith
Thomas W. Smith and Anne P. McMenamini
Margaret C. Snowden, MD
Nancy G. Speer and Jim Shaver
Kathryn Stewart

“WHAT EXCITES ME MOST ABOUT PATHFINDER’S WORK? THE FUTURE. PATHFINDER IS BUILDING OFF ITS EXPERIENCE—EMPOWERING LOCAL PEOPLE TO HELP THEMSELVES AND ADVOCATING WITH GOVERNMENTS AROUND THE WORLD—TO INNOVATE. PATHFINDER’S NEW PARTNERSHIPS AND APPROACHES HAVE THE POTENTIAL TO REACH VAST NUMBERS OF PEOPLE IN NEED.” —*Valerie Spencer, Director, Pathfinder International Board*

Jane A. Howard and Gary R. Carlson
Jean Howard
Douglas L. and Lucena S. Hutton
Julia B. Isaacs
Pat and Henry W. Isenberg
Lydia P. Jacobs
Valerie and James Jennings
Gail K. Johnson and Steven S. Saeger
Megan M. Johnston
Roger and Gloria Jones
Charles R. and Sally B. Jorgensen*
Anne Judge and Michael Prange
Dayna J. Junkins
Mary C. Kaminsky
Sara Altick Keller and Jack Keller
Sarah Horton Kelly, MD
Nancy J. Kossowsky
Elizabeth C. and William K. Kramer
Jean B. Krueger

Mrs. Arthur Barnett McComb
Sally Ann McDonough
Deana and Colin McCliff
Tessa A. McRae
Florence R. Meyer
Brenda Milum
Joan Mistrrough
Mayrav Moreshet
Katharine B. Morgan*
Kondwani Msampha
William R. Muenster
Brandon Muller
Matthew Mulvey
Barbara Brown Munford
Linda and Reid Murchison
Bridget K. Nedzi and William S. Fowler



A NATIONAL CAMPAIGN TO ADDRESS TUBERCULOSIS

Across 25 regions, Pathfinder is supporting Peru's large, multi-sectorial effort to fight tuberculosis. We are harnessing the power of students and civil society to reduce stigma and dramatically improve health. Activities and behavior change materials, developed by the project, have reached nearly seven million people and counting.

FUNDED BY

Individual donors

Dorothy Strong
 Paul Suchanek
 Antoinette Taylor and Stuart Trugman
 Marilee E. and James M. Thompson*
 John E. Tuchler*
 Connie Turner
 John S. and Nina J. Turner
 Barry Ulman
 Virginia A. and Richard Updegraff
 Manuel Urbina, MD, MPH and Patricia Leon, MD
 George Vacek, MD and Jessica E. Saxton
 Patricia Vanderveen
 Betsy Vicksell
 Jean E. and Gregory Wallace
 Timothy A. Wallace
 Scott F. Warner*
 Lee M. Webster
 Mrs. Susan B. and Dr. Gordon C. Weir
 David R. and Sandra W. Weiss
 Susan Chafee Welch and Harold Edwards, Jr.
 Thomas H. Wheadon
 Andrew Wilson
 Susan J. Wing and Thomas P. Lavin
 Kathrin Winkler
 Elizabeth F. Winnacker
 John Winslow*
 Linden Havemeyer Wise and Scott Wise
 Barbara B. Wright
 Lawrence E. Young
 John Zagula
 Gail Zivin, PhD

In Honor Of (Donors In Italics)

Steve Allenby and Family
Petchers Foundation
 The leadership of Claudine Bacher
Charles Gifford
 Isabel Ben's graduation
Leila J. Percy
 Riggs Blinderman
Ellen Blinderman
 Andrea Dean
Patricia A. and William Dean

Four very special mothers
Christian Denes
 Dr. Paul and Mrs. Wanda Earley
Alisha M. Escoto
 Elinor and Harry Emlt
Alice M. and Peter S. Lowenthal
 Cindy Fields' birthday
Gary D. Ambrose
 Werner Fornos
Barbara J. Meislin
 Dick Gamble
Alice C. and Dan H. Nicolson
 Andrew Hall and Jen Moorman
Kathleen Wood
 Jane and Bill Havemeyer
Dr. Philip and Mrs. Paula H. Gordon
 Jane Havemeyer
Wendy Mackenzie and Alexander Cortesi
Margaret H. Page
 Janie Howes, my dear friend
Priscilla Bradshaw-Page
 Sue Huseman and Bill Heuerman
Dr. Eric Williams
 The Jones Family
Jessica L. Rosado
 Ben Kahrl
Rev. and Mrs. Alfred M. Niese
 Judy Kahrl
Dr. Rosemary O. and Mr. John Joyce
 Ms. Jennifer Kiel
Annie Kiel
 The Kulig Family
Jessica L. Rosado
 Mr. Colin and "Lizard" Kuster
Erich Kuster
 Kathryn Lansing
Stuart Lansing
 Mara Aronson and Jeremy Lechan's engagement
Carole and Ronald Lechan

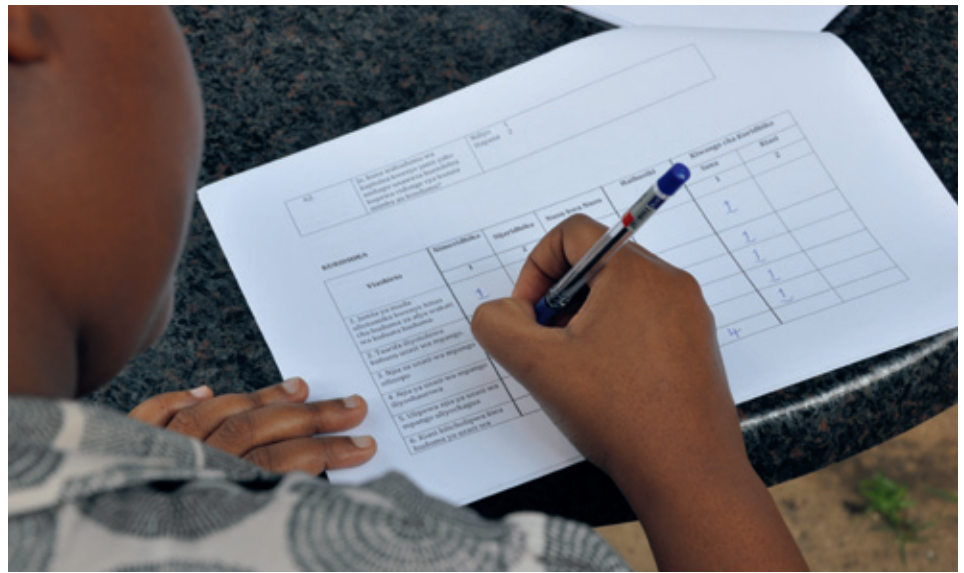
Brian and Diana Lempel
Philippa and Krish Ahuja
 Friends and family in celebration of our wedding
Diana and Brian Lempel
 Mary Lindsay
Catherine S. Dickey
 Mrs. Marguerite Lonchambon
Danielle Freer
Florence Freer
 Elisabeth Lyon
Rebecca J. Cook and Bernard Dickens
 Elisabeth Lyon's birthday
Jeannette M. Hobbins
 Dr. and Mrs. Peter Lyon
Jeannette M. Hobbins
 Sarah Mandlebaum's birthday
Joshua A. Mandlebaum
 Mary Rae Means
Leila J. Percy
 Mary Munter on her birthday
Helen-Jeanne Munter
 Farah Nageer-Kanthor for Mother's Day
Jeremy Kanthor
 Dan Pellegrom
Ms. Marjorie Birnbaum
Linn D. and Howard L. Harwell
Jeannette M. Hobbins
 Dan Pellegrom's retirement
George N. Todd
Faye L. Gelhard
Mary Margaret and William G. Pappas
Ellen Witzling Roff
Stirling D. Scruggs
George N. Todd
 Our mother's memory—Regenia V. Pellegrom
Sally and Dan Pellegrom
David F. and Patsy A. Pellegrom
 George Pillsbury's 90th birthday
Valerie C. Spencer
 Barb & Earl Quist
Patricia A. and William Dean
 Barney and Catharine Regen
David M. Regen

KEEPING GOVERNMENTS ACCOUNTABLE

After receiving HIV services, a young Tanzanian woman fills out a 'citizen report card.' Pathfinder empowers community members with innovative tools, so they can keep their governments accountable for delivering quality, accessible health care.

FUNDED BY

Results for Development Institute



TANZANIA Sarah Echhoff

The Rosado Family

Jessica L. Rosado

Jonathan Rucks in honor of your new important work

Ms. Linda Bennett

Normand F. Smith

Prof. Stephen C. Harrison

Tom Smith

Planned Giving Group of Connecticut, Inc.

Glorian Sorensen

Sharon Kutter

Shari Stier

Jean Yanofsky

Kathryn Strong for the Holidays

Dorothy Strong

Ronda Stryker

Megan M. Johnston

Ronda Stryker, William Johnston and their three children for Christmas

Elisabeth I. Lahti

Susan S. Swift

Mr. Steven Safier

Unnamed Person

Fiona Douglas

Leslie Logel

Mrs. Wardenberg

Ms. Cayla Wardenberg

Andrea Weinecke

John and Sydney Oberle

The birth of my first grandchild

Pete Welch

Barbara and Darrell Williams

Dr. Eric Williams

Dr. Kurt Williams

Dr. Eric Williams

In Memory Of (Donors In Italics)

Charles Breitenbach

Sylvia A. Boris

Dr. Patrick Fischer

Charlotte F. Fischer

Meghan Gallagher

Sigrid Bergenstein

Pat Hoyle

Sarah Boger

Regenia Valentine Pellegrom

Mr. and Mrs. Edward M. Kaplan, Esq.

Susan S. Swift

Michael A. Berman, MD

Pat and Henry W. Isenberg

Legacy Society

Samuel and Sharon Allison

Anonymous (4)

Margaret A. Biggar

Elspeth G. Bobbs

Peter and Alice Broner

Carin C. Brown, MD

Elizabeth Dabney Brown

Mr. Timothy Brown

The Philip Stoddard and Adele Smith Brown Foundation

Nancy Ann Camp

Dr. Dorothy K. Cinquemani

Louise and Loring Conant

Sheila Gamble Cook

Sally M. Davis

William and Patricia Dean

John J. Dumm

Sarah G. Epstein and Donald A. Collins

Cynthia Fields

Dr. and Mrs. Henry W. Foster

Dr. H. Gray† and Susan Multer

Robert and Rosemary Heil

John Hering

Mary B. and Roger Hewlett

Anne Hale Johnson

Charlotte F. Klock†

Mary Levy†

Mary D. Lindsay

Edna M. Lyons

Ruth P. Martin

Sandra L. and David R. Matteson, PhD

Donald H. McClelland†

Peter R. McKnight

Sara Meric

Nancy and Alan Meyer

Donald B. Miller

Pamela M. and Paul M. Ness

Bonnie A. New, MD

Jan Ezra Petersen

Beverly Decker Reed

William and Marie Regan

Eleanor Rogers†

Constance G. Schwarzkopf

Jessica B. Shaeffer†

William J. Shannahan

Normand F. Smith, III, Esq. and Judy Reed Smith

Thomas and Nancy Storm

Donald P. Swartz†

Frederick Test†

The Austin Levy Wahrhaftig Living Trust

Saul J. and Florence Waldman

Ginia Davis Wexler

Verona and Joseph Wheeler

Jo Lynne Whiting

Cheryl Wilfong

Thomas R. and Vicki L. Williams

Morley R. and Mary† Wilson

Jane Ellen Worthen



ENDING EARLY MARRIAGE

In Bihar, India, where 69 percent of all girls marry before the legal age of 18, Pathfinder supports a powerful campaign—made for and led by youth—to end early marriage. In February, The Elders met with youth in Bihar as part of the global Girls Not Brides campaign.

“We are very impressed that you are the ones deciding for yourselves and we want to encourage you.” —*Mary Robinson, former UN High Commissioner for Human Rights and member of The Elders*

FUNDED BY

Individual donors



A GLOBAL LEADER IN SEXUAL
AND REPRODUCTIVE HEALTH

9 GALEN STREET, SUITE 217
WATERTOWN, MA 02472 USA
T 617.924.7200 F 617.924.3833
www.pathfinder.org

THIS IS JUST THE BEGINNING.

Meet the people we serve and learn
about more of our innovative programs
in the 22 countries where we work.

www.pathfinder.org



cover BURUNDI Sala Lewis left UGANDA Jake Lyell

Why this Paper?

We have selected this particular stock, and condensed the report, to ensure more funds can go directly to the people we serve around the world. As you have seen in these pages, Pathfinder believes that our work and environmental stewardship go hand-in-hand. We have chosen to print our annual report on an environmentally responsible paper with 10% post consumer waste and Forest Stewardship Council certification. Also, recent advancements in coated paper offer considerable savings.